

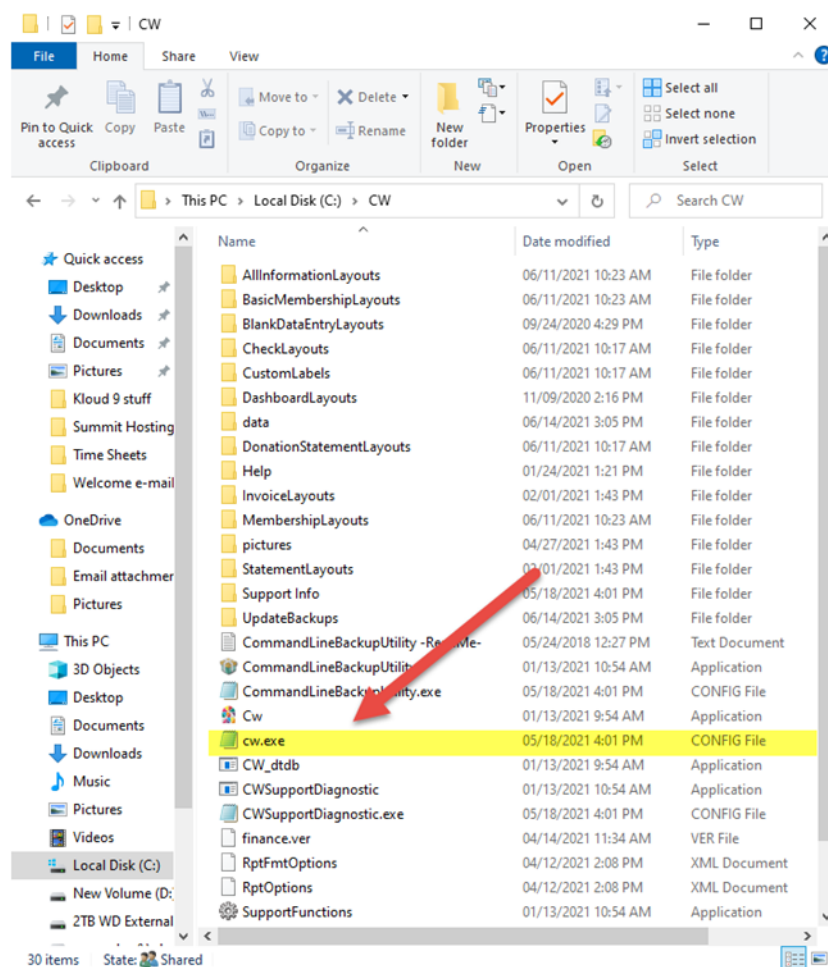
When a computer is renamed, the connection to SQL databases may be broken, which causes the Error *A connection to CHURCHWINDOWS could not be opened – contact support*.

- Windows typically names a new PC something like 'DESKTOP-h25pc123'.
  - When you install Church Windows on a machine, the SQL databases are linked to this name.
  - If you rename the PC to FINANCE-PC, for example, it breaks the connection to SQL.

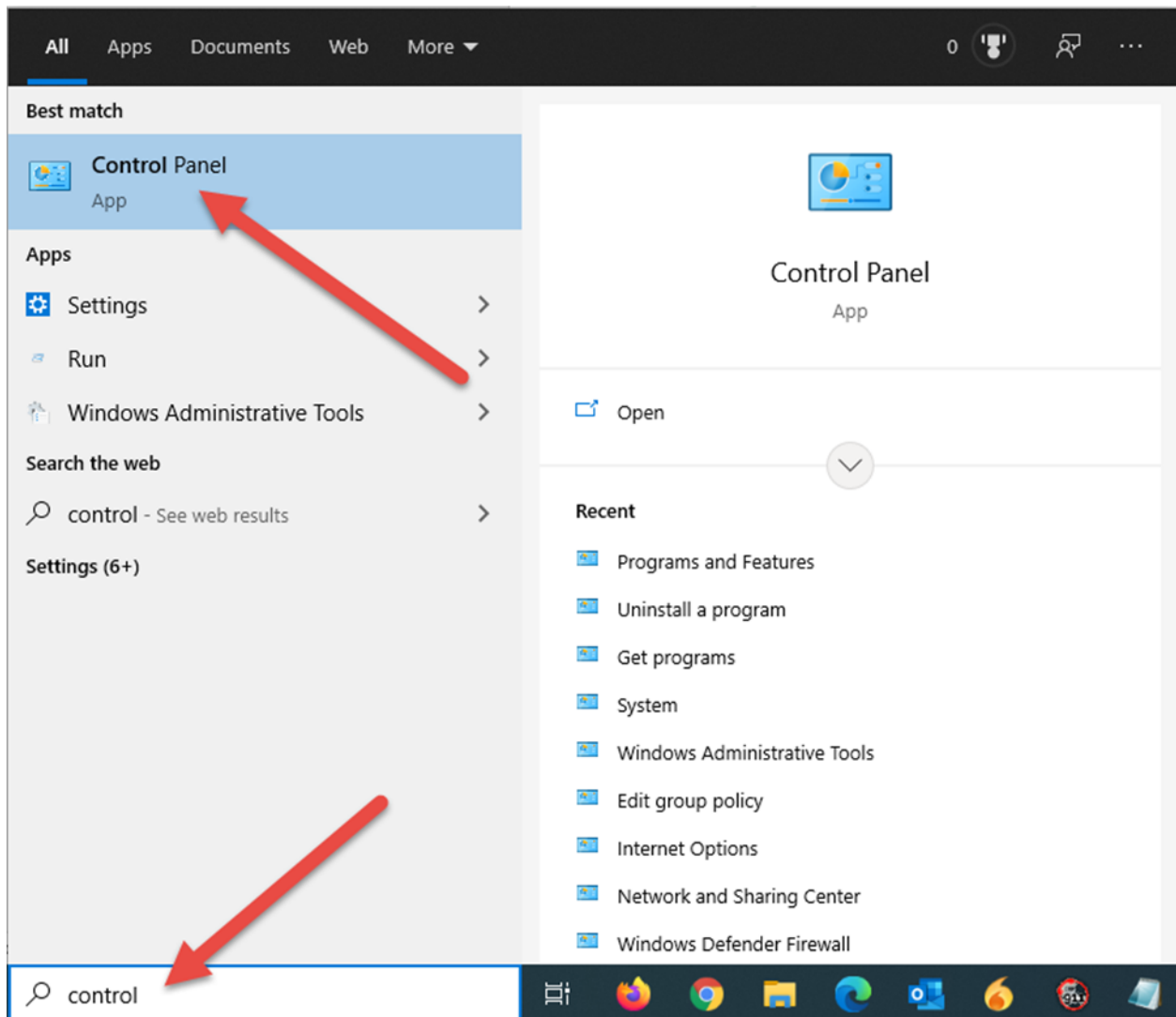
When you try to open Church Windows, you get the Error *A connection to CHURCHWINDOWS could not be opened – contact support*.

To fix the Error -

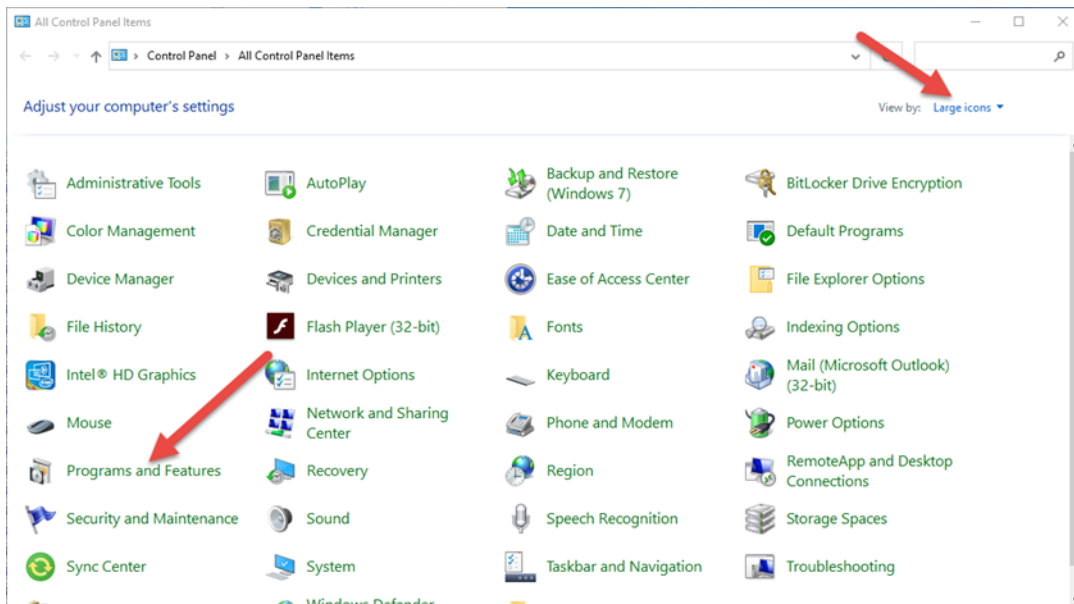
- Right-click on your Desktop Church Windows icon and choose *Open file location*.
- This will open the CW Install folder.
- Locate and Delete the file *cw.exe CONFIG File*.



On the *Type here to search* box, type the word *Control* and click on the *Control Panel App*.

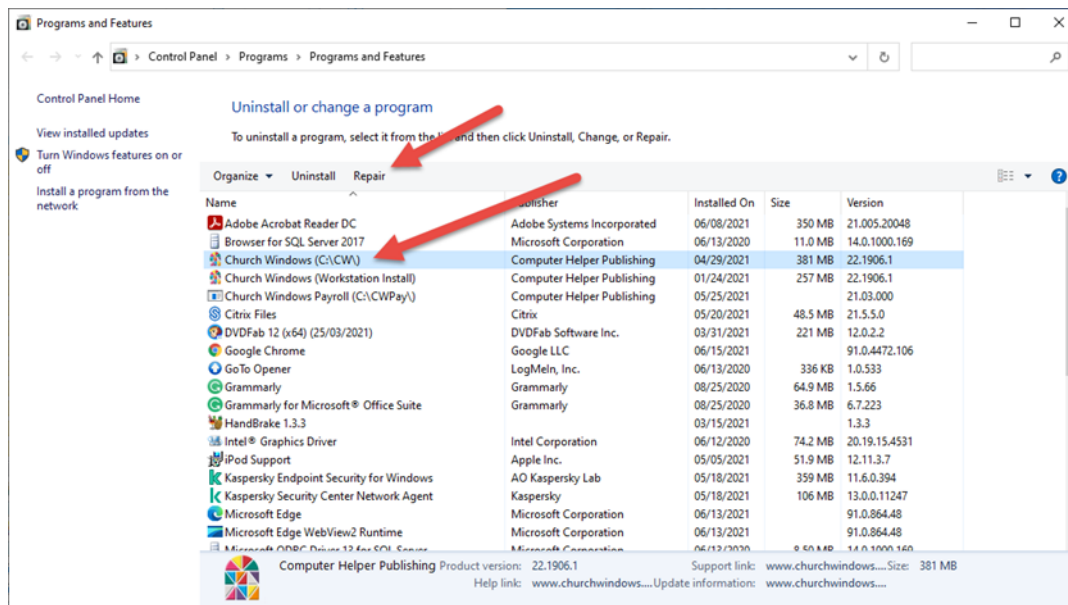


In the upper right corner, make sure your *View By* is set to *Large icons*.



Select the *Programs and Features* option.

Locate your Church Windows install, select it and Click *Repair*.



This will replace the *Config file* with a clean one that will be properly configured the next time you run Church Windows.