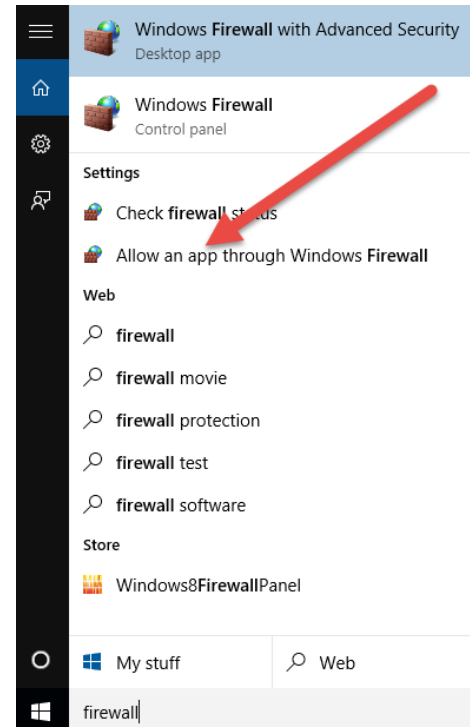


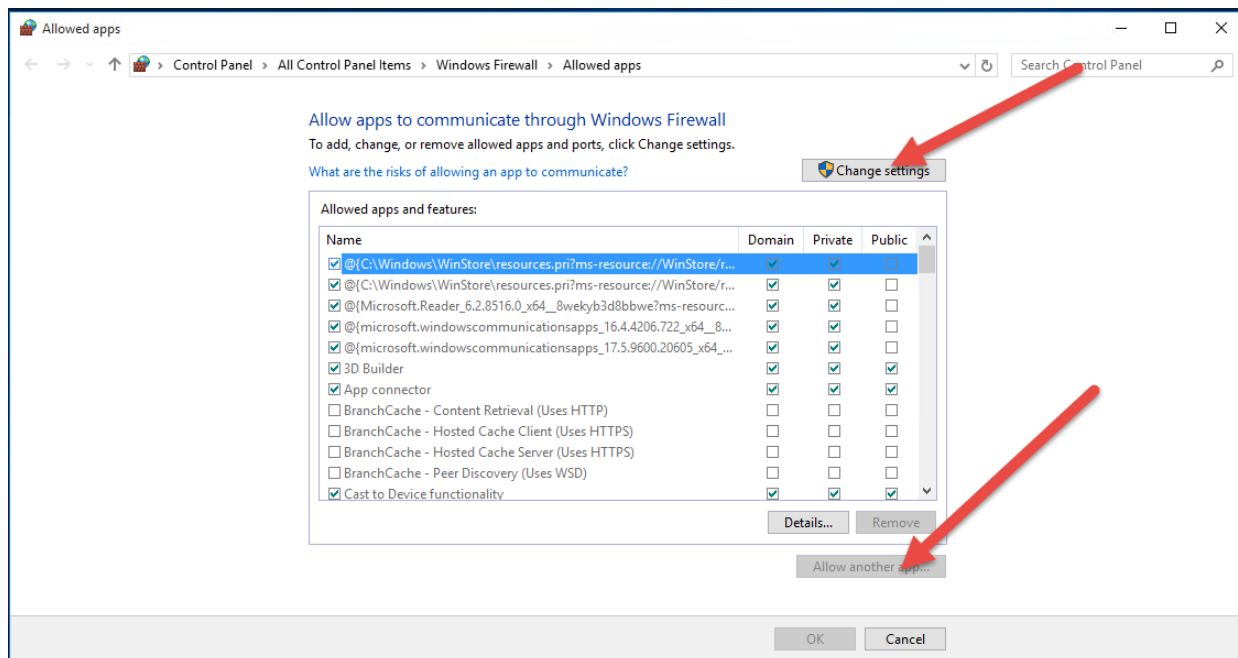
**\*PLEASE NOTE: Church Windows Version 16 may stop functioning due to Windows 10 Updates.**

Click on the *Windows Start* button and type *Firewall*

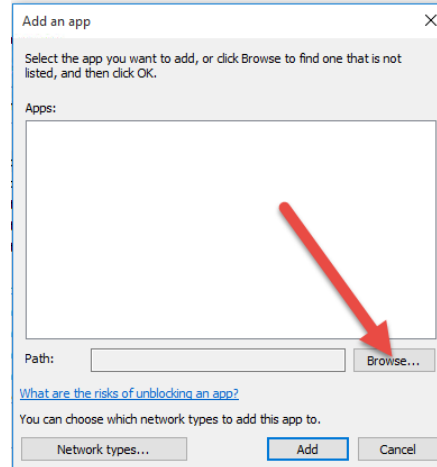
From the list of choices, choose *Allow an app through Windows Firewall*



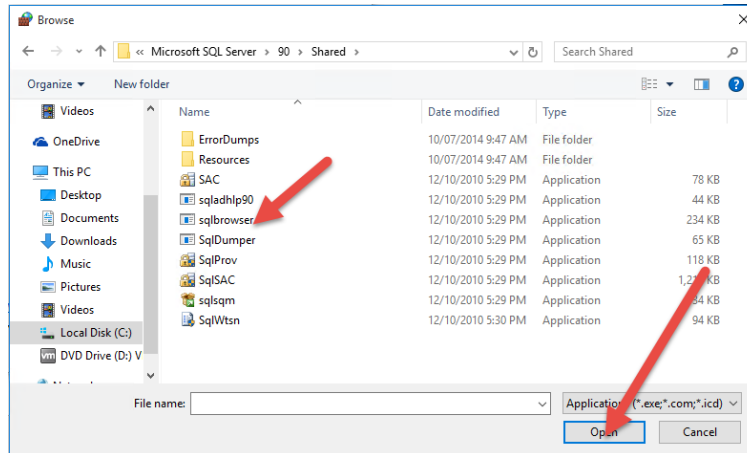
The following screen comes up. Click on *Change settings* and then *Allow another app...*



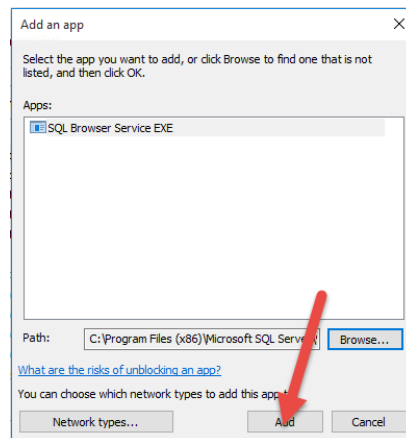
Click *Browse* to search for the first app.



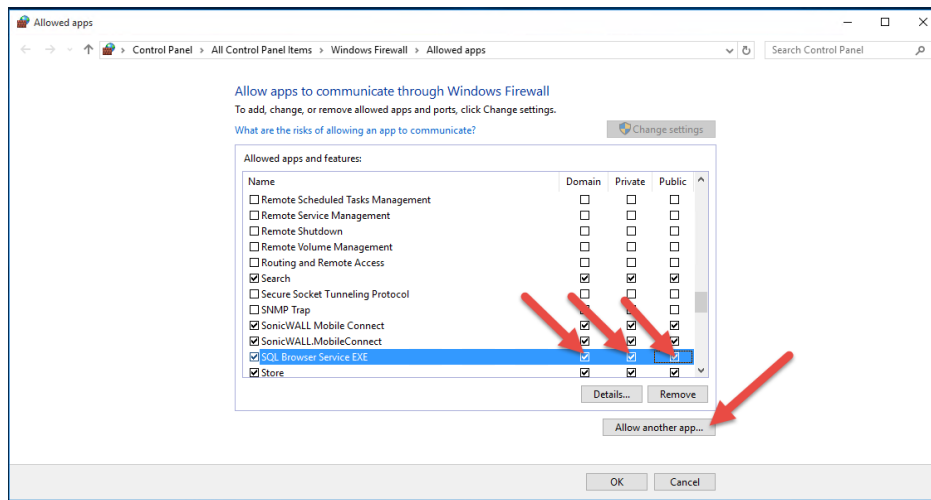
Browse to *C:\Program Files(x86)\Microsoft SQL server\90\Shared* and select *SQLBROWSER.exe* and click the *Open* button. (If your machine is not a 64-bit machine, the path will be *C:\Program Files\Microsoft SQL Server\90\Shared*).



This puts the *SQL Browser Service EXE* into the *Add an app* screen – click *Add*



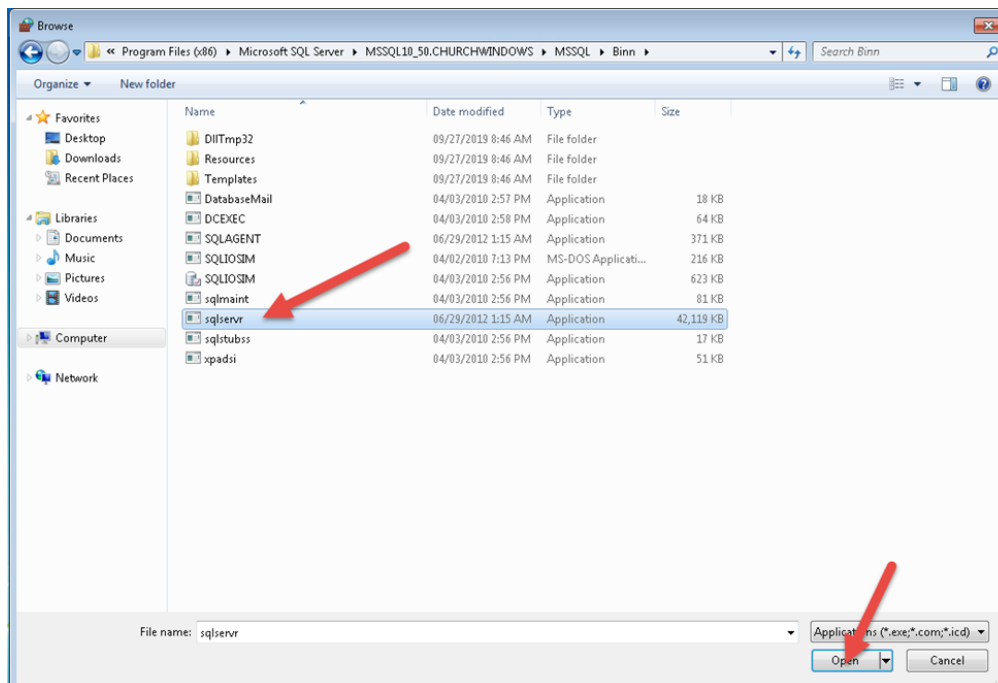
Make sure all of your firewalls (up to 3) are selected and then click *Allow another app*



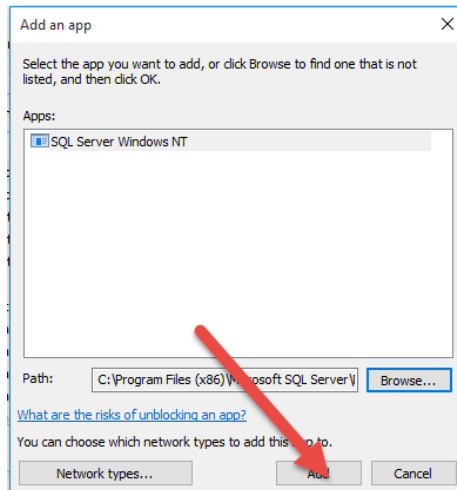
**Church Windows versions 16 and 17**

Browse to C:\Program Files (X86)\Microsoft SQL Server\MSSQL10\_50.CHURCHWINDOWS\MSSQL\Binn then select the SQLSRVR.exe file and click Open.

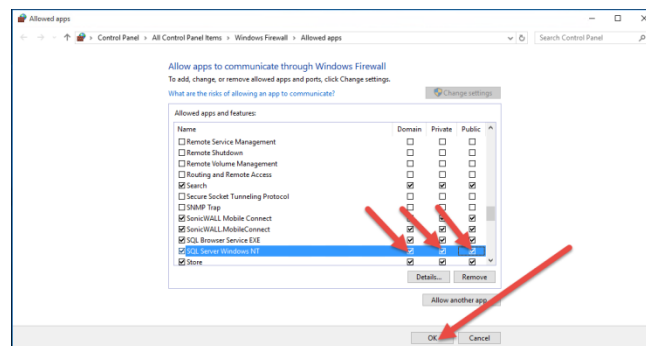
**Please note:** If your machine has a 32-bit o/s, substitute Program Files for Program Files x86.



This puts the SQL Server Windows NT into the *Add an app* screen – click *Add*



Again, make sure all of your firewalls are selected and then click *OK* – you are done!



**Please Note:** These versions use an older version of SQL and without warning, may no longer be supported on Windows 10.